

**SKY**  
**SKY**

SKYLINE GENERAL TRADING

شركة سكايلين للتجارة العامة

# PREQUALIFICATION DOCUMENT



**SKY**  
**SKY**

SKYLINE GENERAL TRADING

شركة سكايلين للتجارة العامة

**“It is the job that is never started that  
takes the longest to finish.”**

## Table of Contents

1-GENERAL INFORMATION

2-COMPANY PROFILE

3-MISSION STATEMENT

4-MEET THE TEAM

5-SKYLINE SERVICES & PRODUCTS

- Ceiling
- Drywall Partitions
- Flooring Solutions

-Total Opening Solutions

- Ceramic tiles
- Exterior Facades
- Decorative Metal Works

6- LIST OF PROJECTS

7- LIST OF CLIENTS

## General Information

<b>Company Name</b>	Skyline For General Trading
<b>Date and Place of Issue</b>	2017, Kuwait
<b>Head Office Address</b>	P.O Box 4258 Safat 13043 Kuwait Salmiya, Salem Al Mubarak St-Maryam Center Area 62, Building 85, 5th Floor Office Number 29



### Scope of our Business

- Ceiling
- Drywall Partitions
- Flooring Solutions
  
- Total Opening Solutions
  
- Ceramic tiles
- Exterior Facades
- Decorative Metal Works

## Company Profile



**SKYLINE General Trading** is based in Kuwait; our well qualified and experienced team aims at assisting you in all the aspects in the field of interior finishings.

We provide full solution for **divisions 8 & 9** and represent different well-known brands which have proven their success and presence in the field of high-quality finishing products. We also deal with the top-quality suppliers; hence we specialize in **full solutions**.

Our project portfolio includes projects as small as residential units to hospitals, hotels and any sized project for which we implement the best and most effective solutions that are tailor made to suit your needs.



## Mission , Vision , Values

Skyline General Trading is a leader in providing value-added construction products and services to our customers by creating a successful partnership with them throughout the construction process. Our pledge is to establish lasting relationships with our customers by exceeding their expectations and gaining their trust through exceptional performance.

Our conservative approach ensures all projects tendered for are competitively priced with adequate resources assigned to ensure high quality delivery in a timely manner. Our strict internal processes and strength in project management have served our clients well in the past and will continue to do so in the future.



## Meet the Team

Skyline's diverse team members from different backgrounds alter the behavior of the group's social majority in ways that lead to improved and more accurate group thinking.



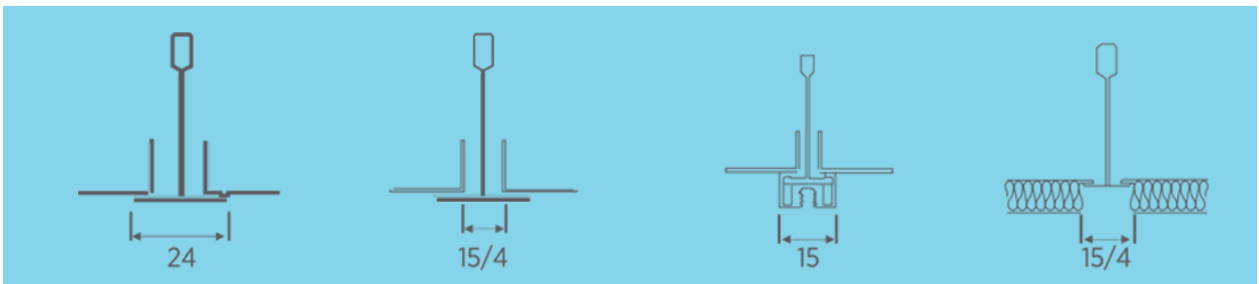
Our Sales Engineers and Architects are well-trained to reflect the client needs in accordance to the local authorities' regulations to ensure a well detailed quotation.

The quotation is based on a cost effective design which reflects the most economical with the maximum usage of the plot coverage area interacting with the client requirements and local regulations.

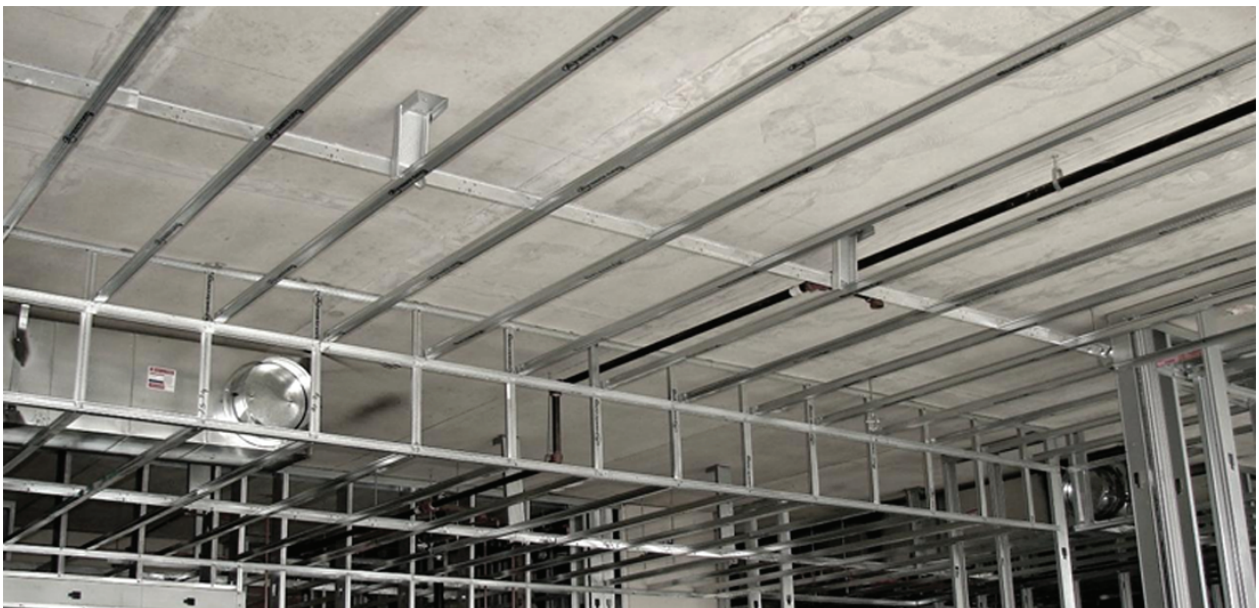


## SERVICES & PRODUCTS Ceiling Works

### Acoustical tiles and boards

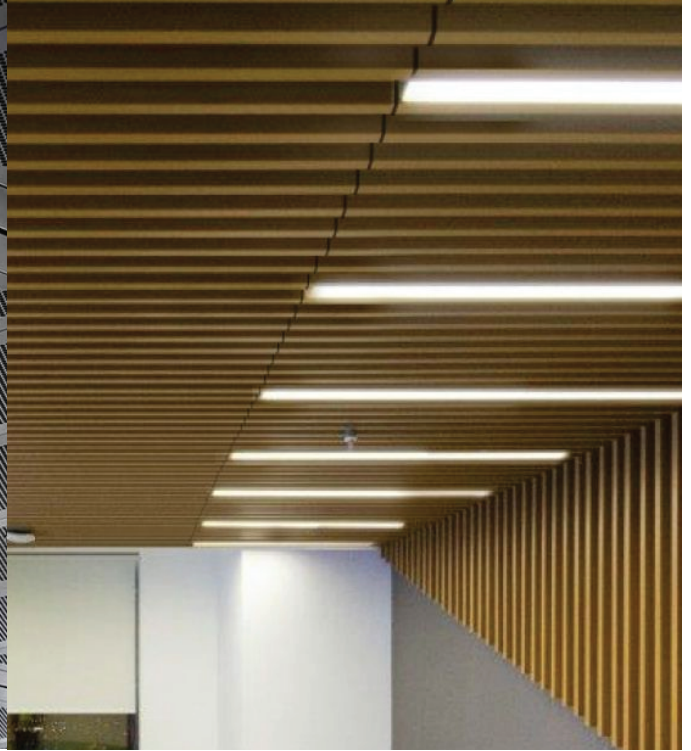


### Drywall Suspension System





## Metal Ceiling Tiles



## Acoustical Gypsum boards



## Drywall Partitions

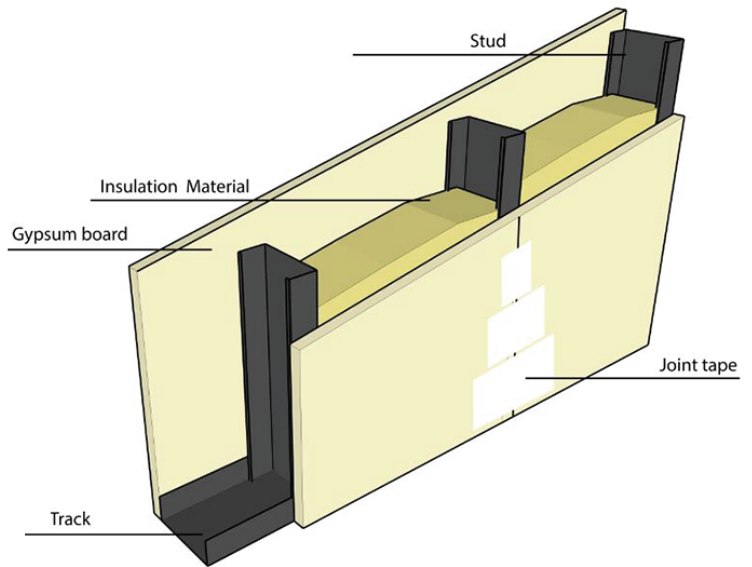
### Steel Profiles:

Drywall Steel framing products cover a wide range of construction needs for premium quality internal wall finishes, including Studs, Runners, Deflection heads, Curved Tracks, Bracing, Corner Beads, Metal Trim...

### Gypsum and other boards:

A wide variety of assemblies exist depending on the project's requirements, be it fire or acoustic requirements. The type of board is then provided based on the given.

Not only gypsum boards are used, fiber boards and cement boards are being used extensively nowadays for different purposes, whether internal or external.



## Flooring Solutions

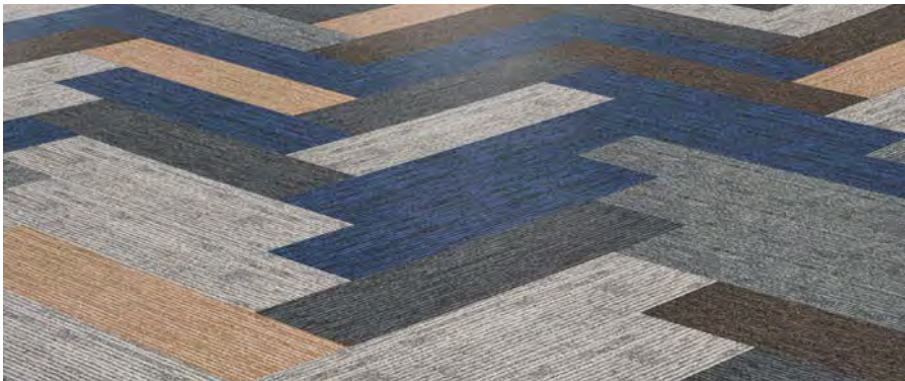
### RAISED ACCESS FLOOR SYSTEMS



- High density chipboard cored panel
- Calcium Sulfate Cored Panel
  - Steel Concrete Panels
  - 3 Layer Galvanized Steel Panel



### CARPET TILE



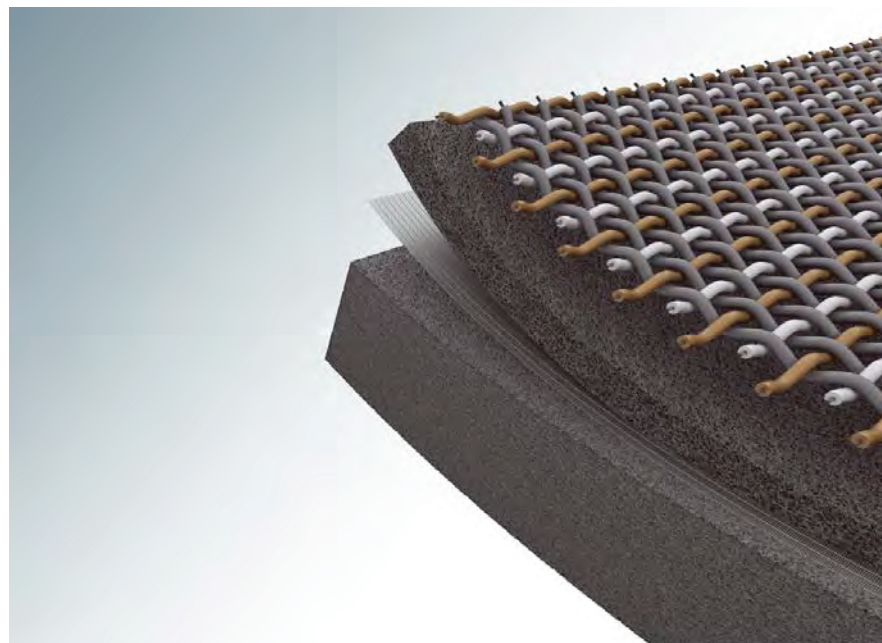
#### ADVANTAGES OF CARPET TILE

- Acoustics performance
- Good weather quality
- Walking comfort
- Suitability for underfloor heating
- Creative design advantage
- Less waste
- Disassemble-assemble advantage
- Ease in variance

### WOVEN VINYL

Woven from revolutionary fibres, this type of floor covering combines the remarkable durability of vinyl with the aesthetic appeal and texture of traditional carpeting.

A true technical innovation developed for the most demanding public areas, such as hotels, offices, shops, restaurants, etc.



## LVT (LUXURY VINYL TILES)



**Water and slip-resistant**  
Moisture-resistant, ideal in kitchens or bathrooms when there is a higher risk of slipping. Firm under foot, with a slip resistance value of R10.



**Strong acoustic insulation**  
Moduleo® produces perfect acoustics in every space. A sound-damping foundation reduces noise to a comfortable level.



**Dirt repelling and low maintenance** The protective layer repels dirt, dust mites and other allergens. Simply sweep, mop or vacuum to keep your floor spotless and hygienic.



**Minimal residual indentation**  
Wear-resistant, proven to withstand the impact of intensive use - including heels - and stains. Ideal for busy spaces.



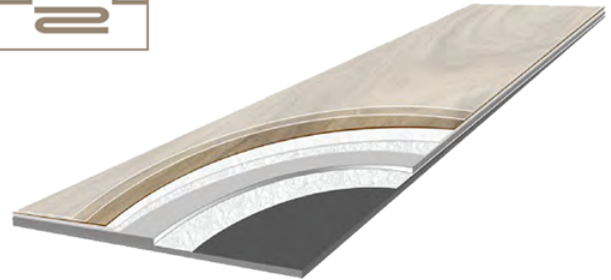
**Minimal residual indentation**  
Wear-resistant, proven to withstand the impact of intensive use - including heels - and stains. Ideal for busy spaces.



**Ideal for renovations**  
Moduleo® floors are thin and flexible, which means they can often be installed on top of your existing floor, provided it is level and pressure-resistant. That saves a lot of time and effort.



**Suitable for underfloor heating**  
Moduleo® feels warm and is perfectly compatible with underfloor heating.



## Total Opening Solutions

### Steel Doors

- NFR (non-fire rated)
- FR (fire rated)
- Acoustic doors
- Security doors (steel only)
- Bullet proof doors (steel only)
- Blast proof door (steel only)



## Total Opening Solutions

### Hardware

- European standard
- American standard
- Glass hardware
- Access control

### Food Service & Laundry Equipment

- Kitchen Equipment
- Laundry Equipment
- Supermarket Refrigeration
- Cold Rooms



## Ceramic Tiles



Floor & wall tiles, that offer solutions focused on architecture, interior design and building construction. High-strength ceramic tiles for indoor and outdoor use.

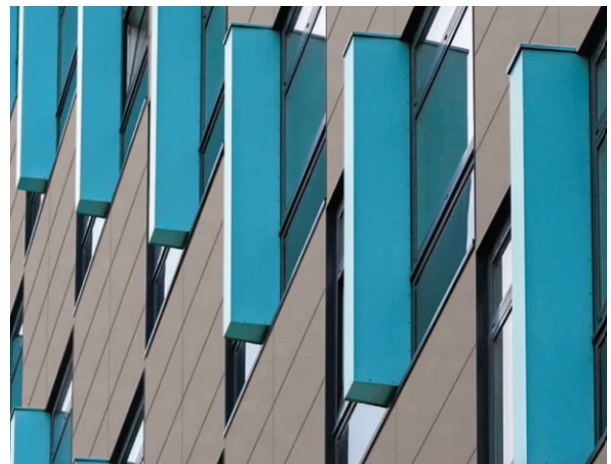
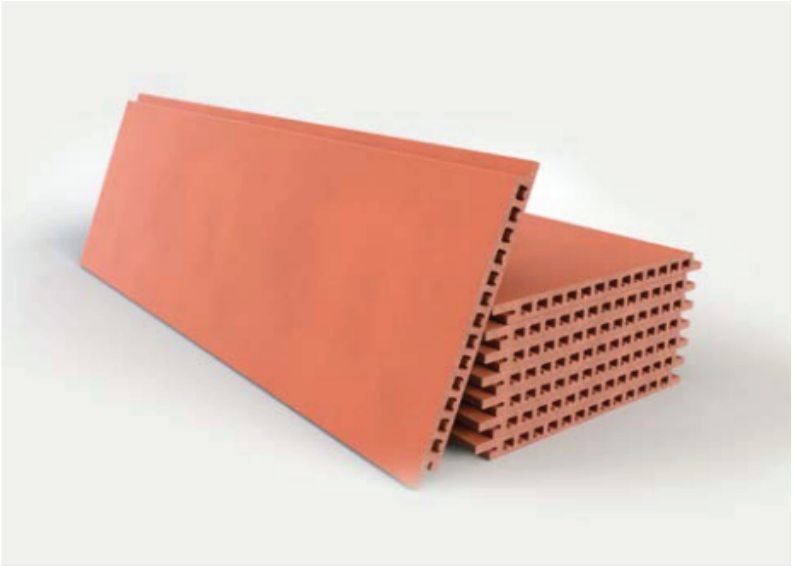
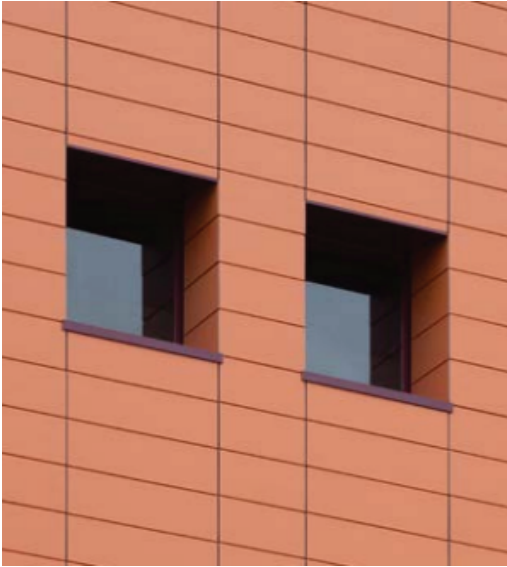


Our products include a multitude of colors, formats, textures, and finishes, as well as the most modern trends. Create your space and a unique environment.



## Exterior Facades

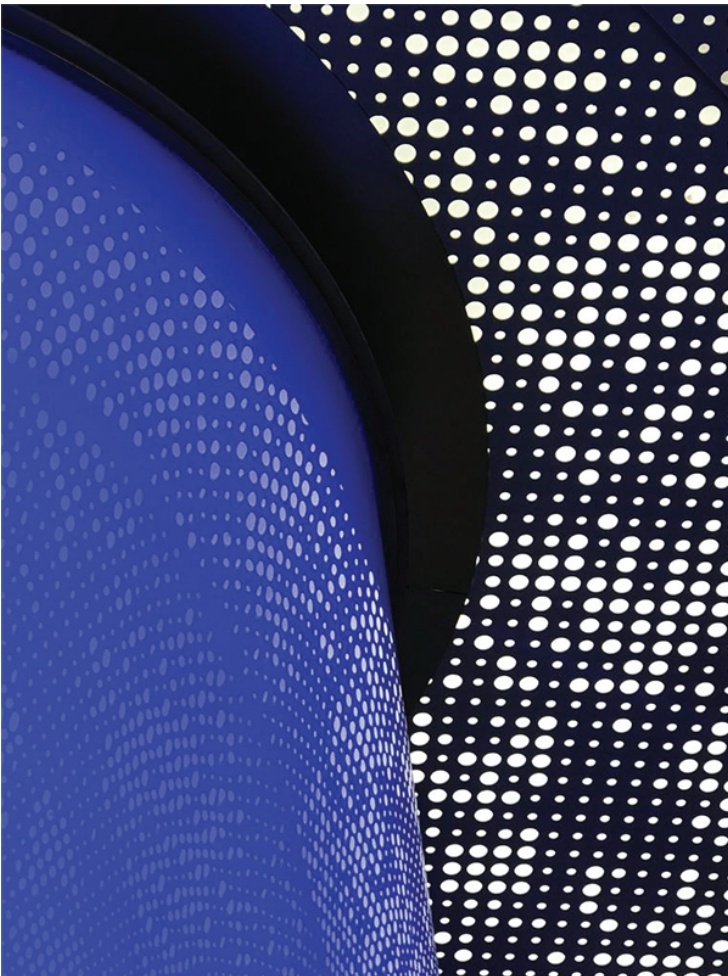
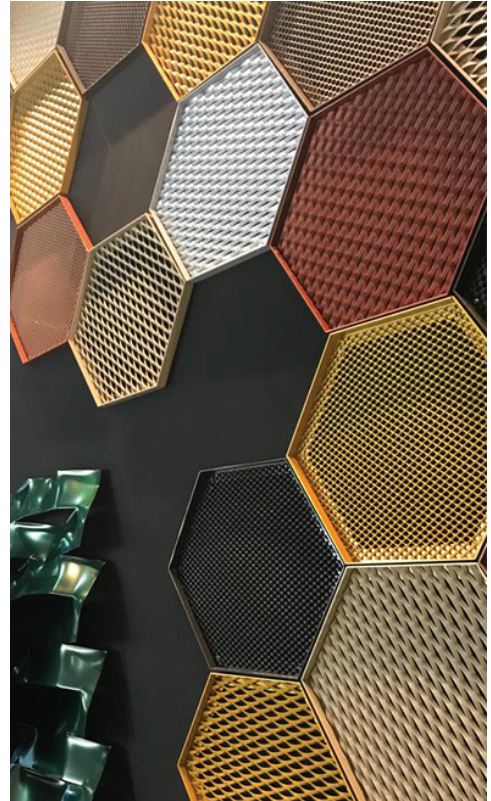
### Ventilated Terra cotta / Ceramic





## Decorative Metal Works

### Expanded /Perforated/ Laser cut Metal Mesh



## List of Projects

- 1-Sabah Al Salem Kuwait University
- 2-Al Zour Refinery Project- Operated by KIPIC
- 3-KGOC (Kuwait Gulf Oil Company) Headquarters
- 4-Farwaniya Hospital Extension
- 5-Public Authority for Applied Education and Training (PAAET).
- 6- JADE Tower
- 7- Ali Al Salem Airbase
- 8- Burj Al Shaya Tower
- 9- KNPC Meena Al Zoor
- 10- International Tennis Court
- 11- KNPC Technical Lub Building
- 12- Alia & Ghalia Towers
- 13- Alghanem Project
- 14- Lower Fars Heavy Oil Development Program
- 15- Petrofac- LFHO Building
- 16-Hawalli Court Complex
- 17- Immigration Building
- 18- La Bagufactory
- 19- Infectious Disease Hospital
- 20- Arfijan Camp
- 21- Al Adan Hospital
- 22- Al Sabah Hospital
- 23- Renewable Energy Power Park
- 24- Buehrang Camp
- 25- Ali Al Salem Airbase
- 26- Arnubah & Dabdoob
- 27-Kuwait Air Defence Improvement
- 28- Heteen Center
- 29- Katsuya , Murooj
- 30- TL5 Project , Abdally
- 31- Sheikh Jaber Al - Ahmad Al Sabah Causeway
- 32-Kuwait international airport Project
- 33- Maternity Hospital
- 34- Hessa Al Mubarak Plot 52 &161
- 35- Jaber Mubarak Al Sabah Stadium
- 36- The Scien fic Center of Kuwait
- 37- Palace of Justice
- 38-Hessa Al Mubarak Plot 160
- 39- Hampton Inn by Hilton Hotel
- 40- TSE Network & Reservoir
- 41- IKEA Wearhouse
- 42- HAHC Hospitals
- 43- Arabella Hotel
- 44- Ardya Hotel
- 45- Taiba Hospital
- 46- Physiotherapy Center
- 47-Warehouse Cinema
- 48- Boubyan Bank HQ
- 49- Financial Administration Building
- 50- KAZMA
- 51- PACE Tower
- 52- Institue of Business & Studies
- 53- Bneid Al Gar Clinics



## List of Clients

- 1- Sadeer General Trading
- 2- Back Combined General Trading & Cont. Co.
- 3- Alghanim International
- 4- Nasser Al Hajiri Corporation
- 5- Tamasuk United Company
- 6- Sorouh Limited Company
- 7- Mitras Intl.Gen. Trad.& Cont. Co.
- 8- British Link Kuwait
- 9- Akeed United Company
- 10- Ahmadiyah Contracting & Trading
- 11- Al Fakhama Company
- 12- Arab Darb General Trading & Contracting Co.
- 13- Global Identity Company
- 14- Impresa Pizzarotti & C.S.P.A
- 15- Specialities Construction for General Trading & Construction Company
- 16- Seobon Construction Ltd.
- 17- Al Shaheen Technical Cont. Co
- 18- Tamdeed Gen. Building & Cont. Co
- 19- Al Yousifi Engineering & Construction Co.
- 20- Sayed Hamid Behbehani & Sons Co.
- 21- Hyundai Engineering & Construction
- 22- Prime One Group Gen. Trad. & Cont. Co.
- 23- Khalifa Al Soory General Trading & Contracting Co.
- 24- Al Bahar National Company
- 25- MN Construction
- 26- Al Khurafi Construction
- 27- China State
- 28- Warba Company
- 29- Nahdat Group
- 30- Al Hamra Company
- 31- Wara Construction Company
- 32- Kuwaiti Manager Company
- 33- Havelock One Interiors WLL for Decoration Mtl & Cont Kuwait
- 34- First Group For General Trading & Contracting
- 35- Middle East Development Co(MEDCO) WLL
- 36- Champion For Hospital Management
- 37- Naser M Al-Baddah& Partner Gen.Trad.& Cont.
- 38- Perfect Building Material
- 39- Constructions Management & Building
- 40- Imar station
- 41- Metallurgical Corporation of China Ltd
- 42- Aqarat General Trading Co.